



# How to create a self signed SSL certificate in IIS for use with iSharePhone

## Why read this document?

If you don't have a third party SSL Certificate (e.g. Thawte, Verisign) but you still want to use SSL encryption between the iSharePhone iPhone clients and the iSharePhone Server, then follow the instructions in this document.

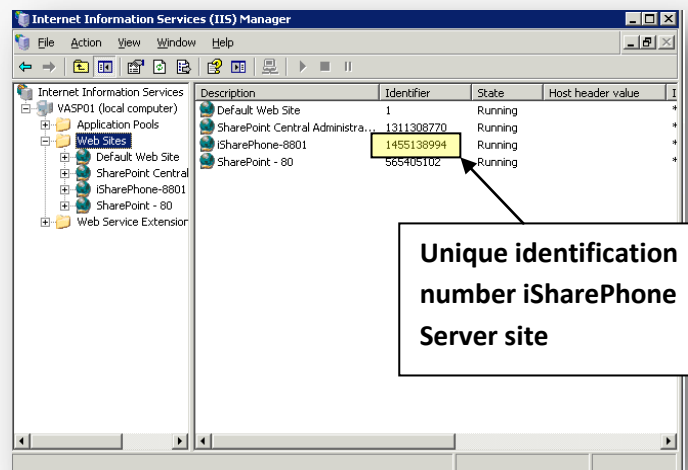
If you do have a third party trusted SSL Certificate (e.g. Thawte, Verisign) follow the normal SSL Certificate installation procedures after installing iSharePhone server (download the installation instructions for iSharePhone Server from [www.isharephone.com](http://www.isharephone.com))

## Prerequisites

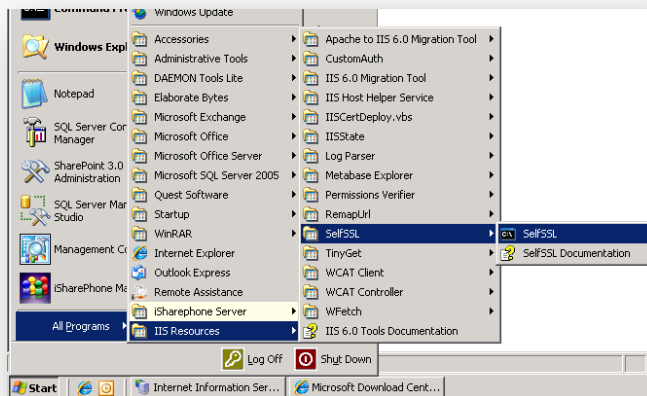
- A completed installation of iSharePhone Server on your Windows 2003 Server and the firewall correctly configured (download the installation instructions from [www.isharephone.com](http://www.isharephone.com));
- iSharePhone iPhone App installed from the App Store;
- iSharePhone iPhone User Settings correctly configured to connect to your iSharePhone server.

## Instructions

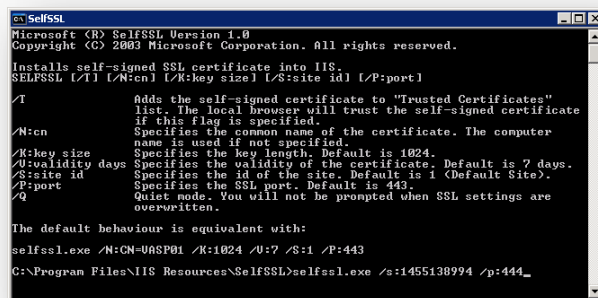
1. [Download](#) and install the Microsoft IIS 6.0 Resource kit on your Windows 2003 Server;
2. Open IIS Manager, expand your webserver and select 'Web Sites' and write down the identifier number of the iSharePhone Website (in this example our iSharePhone Website listens on SSL TCP port 444 and the Web Site identifier is 1455138994):



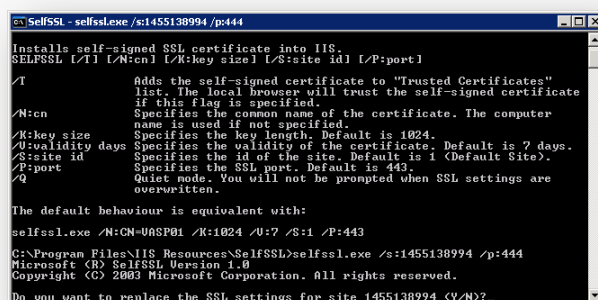
- Run SelfSSL from the start menu:



- Type the following command (use your identifier and your TCP port):  
**selfssl.exe /s:1455138994 /p:444**



- Type 'Y' for confirmation:



6. Self signed certificate successfully assigned:

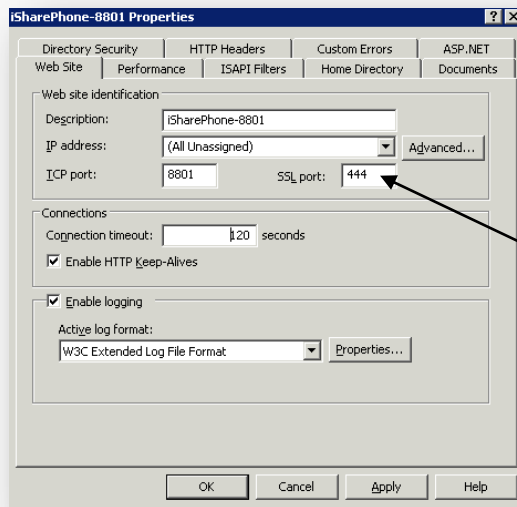
```

SelfSSL
-----
/T      Adds the self-signed certificate to "Trusted Certificates"
       list. The local browser will trust the self-signed certificate
       if this flag is specified.
/N:cn   Specifies the common name of the certificate. The computer
       name is used if not specified.
/K:key size Specifies the key length. Default is 1024.
/U:validity days Specifies the validity of the certificate. Default is 7 days.
/S:site id Specifies the id of the site. Default is 1 (Default Site).
/P:port Specifies the SSL port. Default is 443.
/Q      Quiet mode. You will not be prompted when SSL settings are
       overwritten.

The default behaviour is equivalent with:
selfssl.exe /N:CN=U06SP01 /K:1024 /U:7 /S:1 /P:443
C:\Program Files\IIS Resources\SelfSSL\selfssl.exe /s:1455138994 /p:444
Microsoft (R) SelfSSL Version 1.0
Copyright (C) 2003 Microsoft Corporation. All rights reserved.

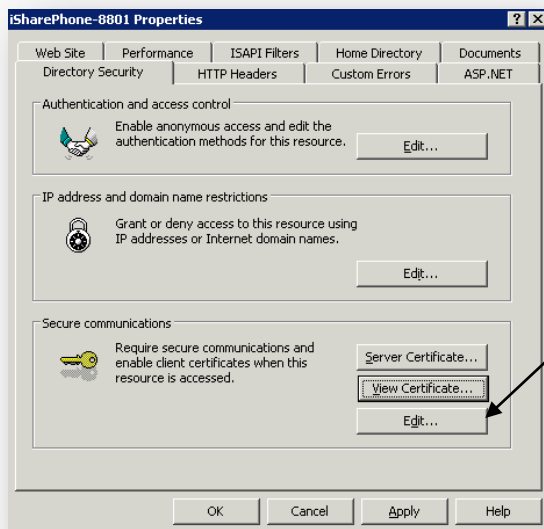
Do you want to replace the SSL settings for site 1455138994 (Y/N)?y
The self signed certificate was successfully assigned to site 1455138994.
C:\Program Files\IIS Resources\SelfSSL>
    
```

7. Open IIS-manager, right click the iSharePhone Web Site and choose properties:



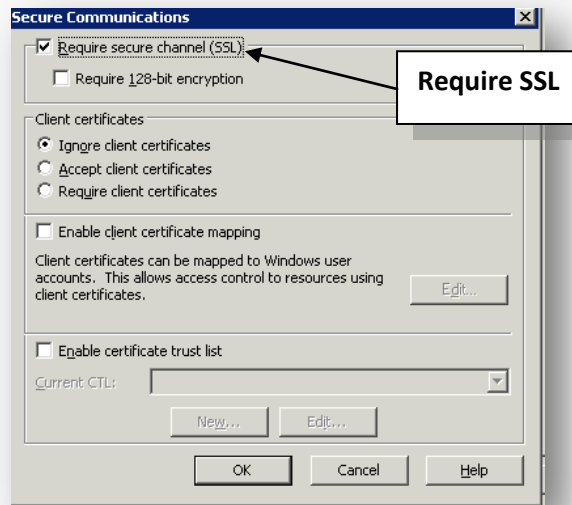
SSL port is set to 444 by the iSharePhone Server installation wizard.

8. Click on the tab "Directory Security":



Click 'Edit...'

9. Check the “Require secure channel (SSL)” checkbox to enforce the SSL encryption for all iSharePhone users:



10. Self Signed Certificate Installation Finished!